

United States Department of the Interior
National Park Service

National Register of Historic Places Registration Form

This form is for use in nominating or requesting determinations for individual properties and districts. See instructions in National Register Bulletin, *How to Complete the National Register of Historic Places Registration Form*. If any item does not apply to the property being documented, enter "N/A" for "not applicable." For functions, architectural classification, materials, and areas of significance, enter only categories and subcategories from the instructions.

1. Name of Property

Historic name: Stafford's Grocery

Other names/site number: Winifred Grocery, 24FR1264

Name of related multiple property listing:
N/A

(Enter "N/A" if property is not part of a multiple property listing)

2. Location

Street & number: 201 Main Street

City or town: Winifred State: MT County: Fergus

Not For Publication: Vicinity:

3. State/Federal Agency Certification

As the designated authority under the National Historic Preservation Act, as amended,

I hereby certify that this x nomination ___ request for determination of eligibility meets the documentation standards for registering properties in the National Register of Historic Places and meets the procedural and professional requirements set forth in 36 CFR Part 60.

In my opinion, the property x meets ___ does not meet the National Register Criteria. I recommend that this property be considered significant at the following level(s) of significance:

___ national ___ statewide **X** local

Applicable National Register Criteria:

X A ___ B **X** C ___ D

<hr/> Signature of certifying official/Title:	Date
<hr/> State or Federal agency/bureau or Tribal Government	

In my opinion, the property ___ meets ___ does not meet the National Register criteria.	
<hr/> Signature of commenting official:	Date
<hr/> Title :	State or Federal agency/bureau or Tribal Government

Stafford's Grocery
Name of Property

Fergus County, Montana
County and State

4. National Park Service Certification

I hereby certify that this property is:

- entered in the National Register
- determined eligible for the National Register
- determined not eligible for the National Register
- removed from the National Register
- other (explain:) _____

Signature of the Keeper

Date of Action

5. Classification

Ownership of Property

(Check as many boxes as apply.)

- Private:
- Public – Local
- Public – State
- Public – Federal

Category of Property

(Check only **one** box.)

- Building(s)
- District
- Site
- Structure
- Object

Stafford's Grocery
Name of Property

Fergus County, Montana
County and State

Number of Resources within Property

(Do not include previously listed resources in the count)

Contributing	Noncontributing	
<u>1</u>	<u> </u>	buildings
<u> </u>	<u> </u>	sites
<u> </u>	<u> </u>	structures
<u> </u>	<u> </u>	objects
<u>1</u>	<u>0</u>	Total

Number of contributing resources previously listed in the National Register N/A

6. Function or Use

Historic Functions

(Enter categories from instructions.)

COMMERCE/TRADE: department store

Current Functions

(Enter categories from instructions.)

COMMERCE/TRADE: department store

Stafford's Grocery
Name of Property

Fergus County, Montana
County and State

7. Description

Architectural Classification

(Enter categories from instructions.)

Other: Western Commercial

Materials: (enter categories from instructions.)

Principal exterior materials of the property:

Walls: STONE/Sandstone

Foundation: STONE/Sandstone

Roof: ASPHALT

Narrative Description

(Describe the historic and current physical appearance and condition of the property. Describe contributing and noncontributing resources if applicable. Begin with a **summary paragraph** that briefly describes the general characteristics of the property, such as its location, type, style, method of construction, setting, size, and significant features. Indicate whether the property has historic integrity.)

Summary Paragraph

Constructed in 1914, the Stafford Grocery is located on Main Street in Winifred, Montana about 37 miles north of Lewistown, the Fergus County seat. The grocery store building consists of a one-story sandstone Western Commercial style building with a wood frame metal clad addition built in the late 1960s or early 1970s on the rear (south) façade facing an alley. The building is oriented north and south and faces north onto Main Street in the southwest quadrant of the intersection of Main and 2nd Avenue. The rectangular-plan building has a shed roof with stepped parapet walls. The fenestration of the building is intact as are most of its original structural and decorative features. With the exception of a newly constructed commercial building immediately to the west, the setting is largely unchanged as it is surrounded by commercial and residential buildings mostly constructed during the first half of the twentieth century, well within the Period of Significance of the grocery store. The Stafford Grocery stands as a fine example of one of the core historic buildings in Winifred's commercial district.

Narrative Description

Winifred is located on Montana Secondary Highway 236 in central Montana. Incorporated in 1918, Winifred is located within a basin between the Judith Mountains to the south and the Upper Missouri River Breaks National Monument to the north. Winifred is located on Dog Creek, which flows into the Missouri River about 20 miles northwest of the community. The Little Belt Mountains are faintly visible to the southwest of Winifred, while the Little Rockies

Stafford's Grocery
Name of Property

Fergus County, Montana
County and State

are visible to the northeast. In 2010, the city claimed a population of 208. Winifred currently functions as a local trade center for area farms and ranches.

Stafford's Grocery (one contributing building)

The Stafford's Grocery Store building is a one-story, sandstone Western Commercial style building with a one-story steel-sided addition attached on the south façade (back). The building displays a rectangular footprint and faces north onto Main Street. The historic section of the building measures 25 feet wide and 80 feet in length. The building rests on a sandstone foundation and has a shed roof sheathed in asphalt. The façade displays cut sandstone blocks set in a coursed pattern. The east and west walls of the building are comprised of rubblestone sandstone set in a random pattern and mortared with concrete. The building has thick stepped parapet walls. The façade cornice is concrete which wraps around the corners of the building; it is capped with pre-finished sheet metal flashing. The building was constructed in 1914 by local stonemason, John Reppe. It remains unknown if the sandstone was salvaged from an abandoned building in the mining camp of Kendall southwest of Winifred or if the stone was locally quarried in the area.¹

Façade (North Elevation)

The storefront's centrally located recessed arcaded entry features a one-light metal door, flanked by large, aluminum-frame plate-glass windows that extend toward the street from the door at an angle. The angled windows meet paired plate-glass windows on each side of the entry that are flush with the rest of the façade. A small single-light transom spans the area above the doorway. Above the entry and plate glass windows is full-length transom consisting of five fixed purple prism glass windows fronted by two fixed glass units. The lower zone of the façade is clad with vertical board-and-batten siding. A horizontal sign with "Winifred Grocery in raised letters is centered above the clearstory on the façade.

East Elevation

The east elevation has five window openings each with a 9-light fixed window. While the original windows have been replaced, the original openings and stone lintels remain. An infilled door opening is located at the southern end of the elevation. It is infilled with concrete cinderblocks. The window openings and doorway have prominent cut sandstone block lintels.

South Façade

The original exterior wall of the south façade is obscured by a nearly square steel-sided wood frame addition built in the late 1960s or early 1970s. The addition, which stands about three-quarters height of the original building, has a shed roof that slopes to the east. It features a false front on the south-facing façade wall. Metal siding clads the south wall of the 1914 structure above the level of the addition's roof. A doorway with a metal door is offset to the east on the south façade of the addition.

¹ Sarah Leonard, comp., *Dog Creek Chronicles: Winifred, Where the Pavement Ends and the West Begins*, (Winifred: Winifred History Committee, 2013), 571.

Stafford's Grocery
Name of Property

Fergus County, Montana
County and State

West Elevation

The west wall once adjoined the east wall of a now demolished drug store building. The wall lacks any window or door openings. A recently constructed (2012) commercial building partially obscures the grocery store's west wall.

Interior

The interior is divided into three sections along a north-south axis with display cases and shelving oriented parallel to the long walls. The floor is tongue-and-groove hardwood and the ceiling clad in decorative pressed tin with a decorative border and cornice. The center row of tiles down the length of the ceiling has been replaced with new metal tiles in a distinctively different, yet compatible pattern. The interior lighting is provided by reproduction schoolhouse fixtures with white opalescent glass commercial-type globes suspended from metal stems hanging from the ceiling. The original lighting in the space – as depicted in the 1915-1920 photograph – was provided by just a few bare bulbs suspended by cloth-covered wire hung from the ceiling. Presumably these were located where there was a perceived need.

Integrity

The Stafford's Grocery building retains good integrity of location, setting, feeling, association, materials, design, and workmanship. Located on the corner of Main Street and 2nd Avenue South, the sandstone building stands in its original location, a prominent and highly visible part of the community. The setting of the property has been slightly diminished by the construction of the adjacent commercial building in 2012; however, as historic buildings continue to stand on three of the four corners of the intersection, integrity of setting, feeling, and association remains. Integrity of workmanship, materials, and design is clear as the building retains its historic footprint and many of its decorative details (prism glass block, cornice) and fenestration (openings) associated with its original construction. The façade was remodeled in the late 1960s or early 1970s. The once prominent display windows on the façade, which originally extended to near ground level, were reduced in size with the lower portion being clad in board-and-batten siding.² However, the basic configuration of the display windows remains intact. The existing "Winifred Grocery" sign on the façade occupies the space once held by the original "Stafford's" sign. Stafford's Grocery is one of only three historic buildings on Main Street that are associated with the community's initial period of development from 1913 to 1921.³ Built as a grocery store in 1914, it retains its original function.

² According to the building's present owner, Brad Bergum, the façade was remodeled after a car driven by an elderly woman collided with the building. Mr. Bergum plans to restore the façade to its original 1914 appearance. Email communication with Jon Axline, 13 October 2015.

³ The 1916 Sanborn Fire Insurance for Winifred shows a substantial commercial district occupying two blocks along Main Street between 1st Avenue and 3rd Avenue. Twenty-four businesses, including a bank, hotel, restaurants, saloon, billiard hall, drug store, two general merchandise stores, two barbershops, and two hardware stores, operated on Main Street between 1916 and 929. In addition to the Winifred Grocery, only the Farmers State Bank building and the old post office building still remain from the 1913-1929 period.

Stafford's Grocery
Name of Property

Fergus County, Montana
County and State

8. Statement of Significance

Applicable National Register Criteria

(Mark "x" in one or more boxes for the criteria qualifying the property for National Register listing.)

- A. Property is associated with events that have made a significant contribution to the broad patterns of our history.
- B. Property is associated with the lives of persons significant in our past.
- C. Property embodies the distinctive characteristics of a type, period, or method of construction or represents the work of a master, or possesses high artistic values, or represents a significant and distinguishable entity whose components lack individual distinction.
- D. Property has yielded, or is likely to yield, information important in prehistory or history.

Criteria Considerations

(Mark "x" in all the boxes that apply.)

- A. Owned by a religious institution or used for religious purposes
- B. Removed from its original location
- C. A birthplace or grave
- D. A cemetery
- E. A reconstructed building, object, or structure
- F. A commemorative property
- G. Less than 50 years old or achieving significance within the past 50 years

Areas of Significance

(Enter categories from instructions.)

COMMERCE

Stafford's Grocery
Name of Property

Fergus County, Montana
County and State

Period of Significance

1914-1966

Significant Dates

1914

Significant Person

(Complete only if Criterion B is marked above.)

Cultural Affiliation

Architect/Builder

John Reppe/Builder

Statement of Significance Summary Paragraph (Provide a summary paragraph that includes level of significance, applicable criteria, justification for the period of significance, and any applicable criteria considerations.)

Stafford's Grocery is eligible for the National Register of Historic Places under criteria A and C. Under Criterion A, the building is associated with the initial period of development of Winifred when it was one of several businesses constructed on the community's Main Street after the arrival of the Milwaukee Railroad's North Montana Line in 1913. Stafford's Grocery is also eligible for listing in the National Register under Criterion C. The building stands as the only remaining building in Winifred constructed of native sandstone. It serves as a good example of a simple Western Commercial style building that retains its decorative elements including a projecting cornice along with a colored prism glass transom. Although modifications to the entry in the late 1960s or early 1970s altered the ground floor appearance of the building somewhat, the changes are not severe enough to significantly compromise the integrity of the grocery store. The Period of Significance begins in 1914 with its construction and ends in 1966, the end of the historic period. The building still functions as a grocery store.

Stafford's Grocery
Name of Property

Fergus County, Montana
County and State

Narrative Statement of Significance (Provide at least **one** paragraph for each area of significance.)

Stafford's Grocery can be listed in the National Register of Historic Places under Criterion A for its association with the socioeconomic development of the railroad and agricultural community of Winifred. Founded at the height of Montana's Homestead Boom in 1913, Winifred functioned as an important trade and transportation center north of Lewistown. Winifred was located at the terminus of the Milwaukee Road Railroad's Hilger-Winifred branch line. Built in 1914, Stafford's Grocery is associated with the initial development of Winifred as a railroad and trade center and has functioned as a grocery store and gathering center for this isolated community for over a century.

The building can also be listed on the National Register of Historic Places under Criterion C as an excellent example of a simple Western Commercial style building located on Winifred's once thriving and still busy Main Street. Constructed of sandstone, Stafford's Grocery (the only stone building in Winifred) retains a distinctive appearance that sets it apart from the more modern commercial buildings in the community. Although the original full-height display windows and the entrance have been modified, the original window openings are intact with modifications easily reversible.

Stafford's Grocery remains a unique representative of a time of economic growth in central Montana because of the Homestead Boom and Winifred's location at the end of the Milwaukee Road Railroad's Hilger-Winifred branch line. It has functioned in its original capacity for its entire history. Stafford's Grocery is worthy of listing in the National Register of Historic Places.

Historic Context

Central Montana was long the territory of many different Native American tribes. So much so, that within a few years after the Lewis and Clark Expedition passed through the area, Euro-American fur traders had established posts on the upper Missouri River to trade furs and hides with the tribes. The American Fur Company built trading posts at the mouth of the Milk, Musselshell, and Judith rivers in the 1830s and 1840s. The beginning of the steamboat era in 1862 brought enterprising Americans, called wood hawks, into the area to cut wood to fuel the steamboats plying the river between St. Louis and Fort Benton. The military became more of a presence in the area in the 1870s as hostilities with the Lakota and Northern Cheyenne Indians ramped up as pressure mounted on them as increasing numbers of Euro-American settlers entered central Montana. In 1873, the federal government mounted an abortive attempt to establish the Crow Indian Reservation a few miles west of the future site of Winifred in the Judith Basin. The near extermination of the bison in eastern Montana in the early 1880s allowed the exploitation of central Montana by cattlemen beginning about 1884. The cattle and, later, sheep industries dominated the regional economy until 1909 when the federal government passed the Enlarged Homestead Act. As a result of the act, thousands of would-be homesteaders

Stafford's Grocery
Name of Property

Fergus County, Montana
County and State

flooded into central Montana to try their hands at dry land farming. The great influx of settlers into the region resulted in the construction of roads, bridges and railroads to serve them.

The Milwaukee Road's North Montana Line

In 1906, officers of the Chicago, Milwaukee, St. Paul & Pacific (Milwaukee Road) Railroad decided to extend its line to the Pacific coast at Seattle in order to take advantage of agriculture, mining, and logging opportunities offered by the northern Rockies and Pacific Northwest. Construction began on the westward extension in 1906 and the last spike driven near Garrison, Montana in May 1909.

When the Milwaukee Road completed its transcontinental line, it immediately began acquiring and building branch lines to increase its customer base. In January 1910, it purchased the Montana Railroad (formerly known as the Jawbone Railroad) between Lombard and Lewistown from Richard Harlow. Within a year, the Milwaukee's newly christened North Montana Line began constructing branch lines to Grass Range, Winnett, Roy, Winifred, and Great Falls. The railroad completed its line between Hilger and Winifred in late 1913.

Prior to completion of the Winifred to Hilger branch, however, the railroad's subsidiary, the Milwaukee Land Company had been acquiring right-of-way and platting new towns along the proposed routes of the branch lines. The region served by the North Montana Line was heavily promoted by the Milwaukee Road among prospective homesteaders. The success of the Milwaukee Road's agriculture and homestead promotion activity helped make the North Montana Line one of the most profitable branch lines of the Milwaukee Road, with 30 percent of the Milwaukee Road's total traffic originating or terminating along the branch line.⁴

Winifred

Born in Norway in 1866, Jacob Gjerde immigrated to the United States in 1883. In December 1888, he obtained the patent for the 160 acres in T21N R18E Section 26 that would later comprise a portion of the Winifred townsite (including the future site of Stafford's Grocery). The December 1884 General Land Office map for the same township, range and section indicates that Gjerde worked a sheep rancher. He also worked as a foreman for the Hilger Ranch. Shortly after purchasing the property, Gjerde mortgaged it to Billings businessman Alexander C. Johnson for \$1,733. Johnson foreclosed on him in 1889 and then sold the property to Andrew Fergus for \$1,000. In 1912, Isaac "Ike" Palmer obtained the patent to the 160 acres in Section 26, T21N, R18E. In March 1912, the Milwaukee Land Company, a subsidiary of the Milwaukee Road Railroad, purchased 57.4 acres of Palmer's homestead for \$4,800 and platted

⁴ Steve McCarter, *Guide to the Milwaukee Road in Montana*, (Helena: Montana Historical Society Press, 1992), 75, 77, 78; Michael P. Malone, Richard B. Roeder, and William L. Lang, *Montana: A History of Two Centuries*, Rev. Ed. (Seattle: University of Washington Press, 1992), 183-184; August Derleth, *The Milwaukee Road: Its First Hundred Years*, (Iowa City: University of Iowa Press, 2002), 126-128, 187; Donald B. Robertson, *Encyclopedia of Western Railroad History*, vol. 2 (Dallas: Taylor Publishing Co., 1991), 325; Don Baker, *The Montana Railroad, Alias: The Jawbone*, (Boulder Co.: Fred Pruett, 1990), 55; Winifred Station Map, CMStP & P Northern Division, Office of Chief Engineer, Chicago, Illinois, December 1922.

Stafford's Grocery
Name of Property

Fergus County, Montana
County and State

the Winifred townsite on November 11, 1912. The townsite consisted of 14 platted city blocks laid out in a grid pattern oriented to the railroad tracks.⁵

The naming of the town is a matter of debate as it is not precisely known for whom the town is named. One possibility stems from Milwaukee Road board members Percy Rockefeller and Edmund Sewall who both had daughters named Winifred. Another possibility is that the town received its name from the daughter of the superintendent who supervised the construction of the Milwaukee Road's Hilger-Winifred branch line and the railyard which included a depot, section house, coal dock, two grain elevators, an office, warehouses, and railroad sidings and a "Y" turn-around.⁶

The construction of the railroad coincided with the peak years of Montana's homestead boom from 1909-1918. By 1916, Winifred boasted a well-developed commercial district that consisted of two hotels, two banks, blacksmith shops, hardware stores, a physician and optometrist, two restaurants, barber shops, a meat market, two groceries, saloons, and a lawyer among other businesses. When the town incorporated in July 1918, it claimed a population of 344 people. Winifred prospered as a railroad shipping point and trade center for area farmers and ranchers. But like other Montana farm communities after World War I, drought and economic depression severely impacted Winifred. By 1930, the town's population dropped to 251 people and talk began about de-incorporating the city. Winifred hung on and benefitted from a Civilian Conservation Corps camp on the north side of town in 1938 and from oil and gas exploration in the area during the 1920s and 1930s. The town suffered setbacks when fires destroyed much of the business district in 1951 and 1952 and when the Milwaukee Road abandoned its Hilger-Winifred line in 1980. In 2010, Winifred had a population of 208 people and today retains its function as a local trade center "where the pavement ends and the West begins."⁷

⁵ General Land Office Records, viewed at www.glorerecords.blm.gov; U.S. Census Records, viewed at www.ancestry.com; Leonard, *Dog Creek Chronicles*, 6, 7; Clyde Reichelt, "Winifred Marks 50th Anniversary," *The Great Falls (Mont.) Tribune*, 21 July 1963; *Winifred Golden Jubilee, 1913-1963*, (Lewistown: Lewistown Daily News, 1963), 6; Winifred Station Map.

⁶ *Montana Place Names from Alzada to Zortman: A Montana Historical Society Guide*, (Helena: The Montana Historical Society Press, 2009), 294; Roberta Carkeek Cheney, *Names on the Face of Montana: The Story of Montana's Place Names*, (Missoula: Mountain Press Publishing Co., 1990), 291; "We Get a Third Version of How Winifred was Named; Any More?," *The Lewistown (Mont.) Daily News*, 23 October 1953; Leonard, *Dog Creek Chronicles*, 7; U.S. Census Records.

⁷ Clyde Reichelt, "Winifred Marks 50th Anniversary," *The Great Falls Tribune*, 21 July 1963; Zeke Scher, "Winifred, Named for Young Lady, Enters Middle Age Still Friendly and Prosperous," *The Lewistown Daily News*, 11 October 1950; Sanborn Fire Insurance Maps, 1916 and 1929, viewed at <http://sanborn.umi.com>; *Winifred Golden Jubilee, 1913-1963*, (Lewistown: Lewistown Daily News, 1963), 6-10; U.S. Census Records; Leonard, *Dog Creek Chronicles*, 9, 12.

Stafford's Grocery
Name of Property

Fergus County, Montana
County and State

Stafford's Grocery

In March 1913, James M. Stafford leased Lot 1, Block 11 of the Winifred Townsite from the Milwaukee Land Company and announced plans in October to build a store on his property.⁸ Born in England in 1866, Stafford immigrated to the United States in 1882 and settled first in Pennsylvania where he and his father were employed as coal miners. In 1895, James and his brother, Peter, moved to Montana and went to work as coal miners for Marcus Daly's Anaconda Copper Company in Belt. After a short time, James left the mines and opened a confectionary in Belt. He moved to the gold mining camp of Giltedge in the late 1890s and opened a general store in partnership with C. F. Randolph. The partnership dissolved when the mines played out and Stafford moved on to Kendall, another booming mining camp in the North Moccasin Mountains. In Kendall he also operated a store until, as in Giltedge, the mines failed. He and his brother then relocated to the nearby settlement of Hilger by 1910. Along with his Hilger store, Stafford filed a homestead claim for 160 acres in Section 22, T21N, R18E, obtaining the patent in March 1915. In 1911, the Stafford brothers applied for and received a charter to establish a post office on their homestead. Called Stafford, it was located about four miles south of Winifred. The post office was discontinued when the Postal Service approved the Winifred post office.⁹

Shortly after James Stafford's announcement about the construction of a new grocery store in October 1913, he hired John Reppe to construct the building. A native of Iowa, Reppe and his family immigrated to Fergus County in 1913 and filed on a 240-acre homestead three miles east of the new community of Winifred. Like many other homesteaders, Reppe supplemented his income by accepting work off his homestead; in this case, his skills as a bricklayer and stonemason made him very much in demand in Winifred.¹⁰ It is not known, however, if the sandstone Reppe utilized for the building was salvaged from an abandoned building in Kendall or if it was locally quarried.¹¹ Stafford's Grocery opened its doors on August 1, 1914.¹²

⁸ Stafford purchased the property from the Milwaukee Land Company in April 1918 for \$530. Deed Book 66, p. 129, Clerk and Records Office, Fergus County Courthouse, Lewistown, Montana

⁹ "Winifred," *The Fergus County Democrat*, 14 October 1913; Robert George Raymer, *Montana: Its Land and People*, vol. 3 (Chicago: The Lewis Publishing Co., 1930), 100-101; Leonard, *Dog Creek Chronicles*, 571-572; Cheney, *Names on the Face of Montana*, 253.

¹⁰ The documentation regarding Reppe's construction activities is limited aside from his mention in the local histories. Only a few issues of the Winifred newspaper exist and lack any allusion to him. However, his skill as a stone mason strongly suggests his involvement in the construction of other buildings in town and likely the nearby area.

¹¹ Kendall was a mining camp from 1896 until 1920. It is possible that the Winifred Grocery originated as Stafford's grocery store in Kendall during his tenure in the camp. No local sandstone quarries have been identified as of this writing. The Winifred newspaper, the *Winifred Times*, is incomplete for this period. Muriel Sibell Wolle, *Montana Pay Dirt*, (Athens, OH: Sage Books, 1963), 358-367.

¹² Raymer, *Montana*, 100-101; Leonard, *Dog Creek Chronicles*, 489, Arthur, *A History of Winifred*, 28; U.S. Census Records; *Winifred Golden Jubilee*, 7.

Stafford's Grocery
Name of Property

Fergus County, Montana
County and State

With the completion of the building, Stafford moved the stock from his Hilger store to Winifred. Stafford boasted that the inventory of his store was valued at \$15,000. James focused his attention on running the store, while his brother, Peter, continued to farm their 400-acre homestead. James lived in the basement of the store. Active in the community, James served on the Winifred city council from 1923 to 1928 and was, for a time, the community's mayor. James Stafford died out-of-state in the early 1940s and Missoula attorney Oskar O. Lympus and his wife, Gladys, bought the property at an estate auction for \$3,765 in July 1943. A little over nine months later, in April 1944, Lympus sold the property and business to Earl B. Hunt, who had been employed at the store as a clerk since the 1920s. The store operated as the E. B. Hunt Mercantile until May 1965. Earl died in July 1960 and ownership of the building passed to his daughter, Lura, and son-in-law, Troy Martin in February 1971. Lura died in March 1971 and Troy operated the grocery as Martin's General Merchandise for only a short time before selling it to C. G. and Freeda Carlstrom in May 1971. The business has been known as the Winifred Grocery since the early 1970s. The current owner, Winifred 201 Main LLC, acquired the property in August 2009.¹³

Architectural Significance

Stafford's Grocery stands as an important building along Main Street of Winifred, Montana. The building represents a strong example of Western Commercial Architecture in this small town. It also represents the only extant building in town constructed of sandstone. In addition to the use of sandstone for its walls, sandstone was used for the building's foundation. Although the origin of the sandstone remains unknown, the construction of the building was the work of a skilled mason, John Reppe. While the sandstone used in the construction of the non-facade elevations was laid in a random pattern, the entry façade presents an ordered arrangement of square-cut ashlar stone set in regular courses and finished with nearly executed beaded mortar joints. Common in the late nineteenth and early twentieth century, the Western Commercial architectural style presents a basic storefront organization and symmetrical upper facade exhibiting various forms of ornamental details. The characteristics of the Western Commercial architectural style are typical of most western downtown commercial districts and occur in both large and small towns. The style features a long, rectangular plan that sits perpendicular to the street. Flat or gently sloping roofs hidden by a parapet or pediment are common. They stand one to three stories in height, and are usually constructed of brick. The street level generally houses stores, while offices, meeting halls, rooms, or hotels occupy the upper levels, when they occur. A typical storefront consists of a central recessed entry flanked to each side by large plate glass windows. Transom lights across the entrance and display windows illuminate the interior. Window openings are symmetrical and dominate the upper façade wall, and integrate different elements to accent the window treatments or create a horizontal pattern.

¹³ Raymer, *Montana*, 101; Leonard, *Dog Creek Chronicles*, 572; *Winifred Golden Jubilee*, 11; U.S. Census Records; Deed Book 139, p. 130; *Ibid* 145, p. 475; *Ibid* 160, p. 540; *Ibid* 15, p. 185; *ibid* 191, p. 216; *Ibid* 19, p. 239; *Ibid* 193, p. 881.

Stafford's Grocery
Name of Property

Fergus County, Montana
County and State

9. Major Bibliographical References

Bibliography (Cite the books, articles, and other sources used in preparing this form.)

Arthur, James, Comp. *A History of Winifred, Montana*. Lewistown: Central Montana Publishing, 1988.

Baker, Don. *The Montana Railroad, Alias: The Jawbone*. Boulder Co.: Fred Pruett, 1990.

Cheney, Roberta Carkeek. *Names on the Face of Montana: The Story of Montana's Place Names*. Missoula: Mountain Press Publishing Co., 1990.

Deed Records. Clerk and Recorders Office. Fergus County Courthouse. Lewistown, Montana.

Derleth, August. *The Milwaukee Road: Its First Hundred Years*. Iowa City: University of Iowa Press, 2002

General Land Office Land Records. Viewed at www.glorerecords.blm.gov.

General Land Office Map, 3 December 1884. Viewed at www.glorerecords.blm.gov.

Leonard, Sarah, Comp. *Dog Creek Chronicles: Winifred Where the Pavement Ends and the West Begins*. Winifred: Winifred History Committee, 2013).

Malone, Michael P., Richard B. Roeder, and William L. Lang. *Montana: A History of Two Centuries*. Rev ed. Seattle: University of Washington Press, 1992).

McCarter, Steve. *Guide to the Milwaukee Road in Montana*. Helena: Montana Historical Society Press, 1992.

Montana Place Names from Alzada to Zortman: A Montana Historical Society Guide. Helena: Montana Historical Society Press, 2009.

Raymer, Robert George. *Montana: The Land and People*. Three volumes. Chicago: The Lewis Publishing Company, 1930.

Reichelt, Clyde. "Winifred Marks 50th Anniversary." *The Great Falls (Mont.) Tribune*, 21 July 1963.

Roberts, Donald B. *Encyclopedia of Western Railroad History*. Three volumes. Dallas: The Taylor Publishing Company, 1991.

Stafford's Grocery
Name of Property

Fergus County, Montana
County and State

Sanborn Fire Insurance Maps. Winifred, Montana, 1916, 1929. Viewed at <http://sanborn.umi.com>.

Scher, Zeke. "Winifred, Named for Young Lady, Enters Middle Age Still Friendly and Prosperous." *The Lewistown (Mont.) Daily News*, 11 October 1950.

Spritzer, Don. *Roadside History of Montana*. Missoula: Mountain Press Publishing Co., 1999.

United States Census Records. Viewed at www.ancestry.com.

"Winifred." *The Fergus County Democrat*, 14 October 1913.

Winifred Golden Jubilee, 1913-1963. Lewistown: Lewistown Daily News, 1963.

Wolle, Muriel Sibell. *Montana Pay Dirt*. Athens, OH: Sage Books, 1963

Previous documentation on file (NPS):

- preliminary determination of individual listing (36 CFR 67) has been requested
- previously listed in the National Register
- previously determined eligible by the National Register
- designated a National Historic Landmark
- recorded by Historic American Buildings Survey # _____
- recorded by Historic American Engineering Record # _____
- recorded by Historic American Landscape Survey # _____

Primary location of additional data:

- State Historic Preservation Office
- Other State agency
- Federal agency
- Local government
- University
- Other
- Name of repository: _____

Historic Resources Survey Number (if assigned): _____

Stafford's Grocery
Name of Property

Fergus County, Montana
County and State

10. Geographical Data

Acreeage of Property 0.08

Use either the UTM system or latitude/longitude coordinates

Latitude/Longitude Coordinates

Datum if other than WGS84: _____

(enter coordinates to 6 decimal places)

- | | |
|-----------------------|--------------------------------|
| 1. Latitude: 47.55918 | Longitude: -109.37646608140442 |
| 2. Latitude: | Longitude: |
| 3. Latitude: | Longitude: |
| 4. Latitude: | Longitude: |

Or

UTM References

Datum (indicated on USGS map):

NAD 1927 or NAD 1983

- | | | |
|-------------|-----------------|-------------------|
| 1. Zone: 12 | Easting: 622135 | Northing: 5268584 |
| 2. Zone: | Easting: | Northing: |
| 3. Zone: | Easting: | Northing: |
| 4. Zone: | Easting : | Northing: |

Verbal Boundary Description (Describe the boundaries of the property.)

The property is bounded on the north by Main Street, the south by an alley between Main and Day streets and on the east by 2nd Avenue South.

Boundary Justification (Explain why the boundaries were selected.)

The building occupies a city lot measuring 25 feet wide (E-W) x 140 long (N-S), which equals 3,500 square feet or approximately 0.08 acre. Stafford's Grocery is located in the SW¹/₄ NE¹/₄ of Section 26, T21N, R18E. The building occupies Block 11, Lot 1 in the Winifred Original Townsite.

Stafford's Grocery
Name of Property

Fergus County, Montana
County and State

11. Form Prepared By

name/title: Zane Fulbright/ Historian & Jon Axline/Historian
organization: _____
street & number: 920 NE Main Street/448 Parriman Street
city or town: Lewistown/Helena state: MT zip code: 59457/59602
e-mail zanelle@midrivers.com & jaxline@mt.gov
telephone: (406) 366-9765/(406) 422-2111
date: January, 2016

Property Owner:

(Complete this item at the request of the SHPO or FPO.)

name Winifred 201 Main LLC (Brad Bergum)
street & number 1441 Great Heron Drive telephone (406) 462-5444
city or town Santa Rosa state CA zip code 95409

Additional Documentation

Submit the following items with the completed form:

- **Maps:** A **USGS map** or equivalent (7.5 or 15 minute series) indicating the property's location. (Winifred West)
- **Sketch map** for historic districts and properties having large acreage or numerous resources. Key all photographs to this map.
- **Additional items:** (Check with the SHPO, TPO, or FPO for any additional items.)

Photographs

Submit clear and descriptive photographs. The size of each image must be 1600x1200 pixels (minimum), 3000x2000 preferred, at 300 ppi (pixels per inch) or larger. For simplicity, the name of the photographer, photo date, etc. may be listed once on the photograph log and doesn't need to be labeled on every photograph.

Stafford's Grocery
Name of Property

Fergus County, Montana
County and State

Photo Log (all photographs)

Name of Property: Stafford's Grocery

City or Vicinity: Winifred

County: Fergus

State: Montana

Photographer: Zane Fulbright

Date Photographed: July 22, 2014

Description of Photograph(s) and number, include description of view indicating direction of camera:

1 of ____.

Paperwork Reduction Act Statement: This information is being collected for applications to the National Register of Historic Places to nominate properties for listing or determine eligibility for listing, to list properties, and to amend existing listings. Response to this request is required to obtain a benefit in accordance with the National Historic Preservation Act, as amended (16 U.S.C.460 et seq.).

Estimated Burden Statement: Public reporting burden for this form is estimated to average 100 hours per response including time for reviewing instructions, gathering and maintaining data, and completing and reviewing the form. Direct comments regarding this burden estimate or any aspect of this form to the Office of Planning and Performance Management, U.S. Dept. of the Interior, 1849 C. Street, NW, Washington, DC.

United States Department of the Interior
National Park Service

National Register of Historic Places
Continuation Sheet

Stafford's Grocery

Name of Property

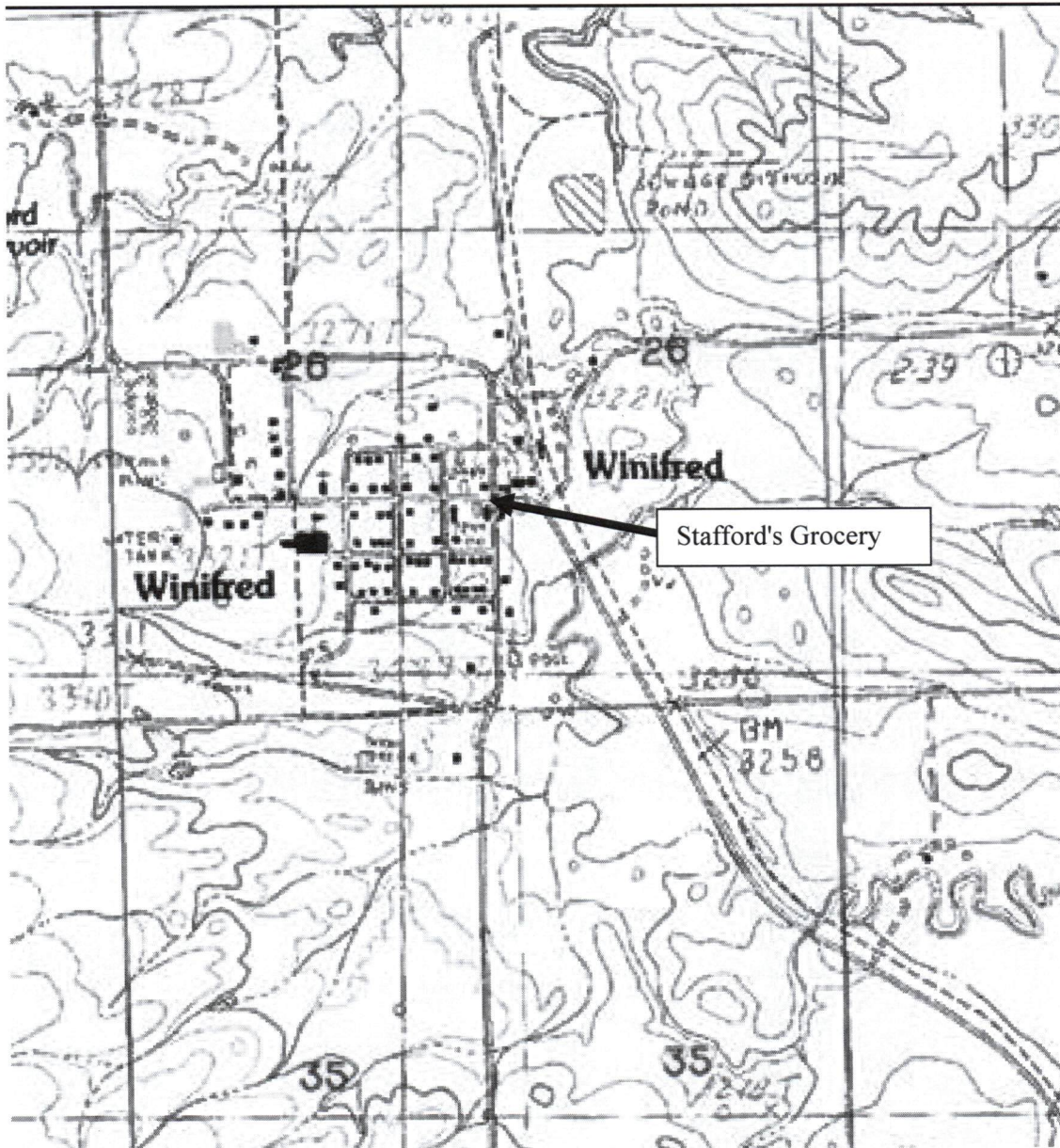
Fergus, Montana

County and State

Name of multiple listing (if applicable)

Section number Additional Documentation—Maps

Page 19



Location of Stafford's Grocery. Found on the USGS 7.5' Quadrangle maps: Winifred West (provisional 1985), Winifred East (provisional 1985).

United States Department of the Interior
National Park Service

National Register of Historic Places Continuation Sheet

Stafford's Grocery

Name of Property

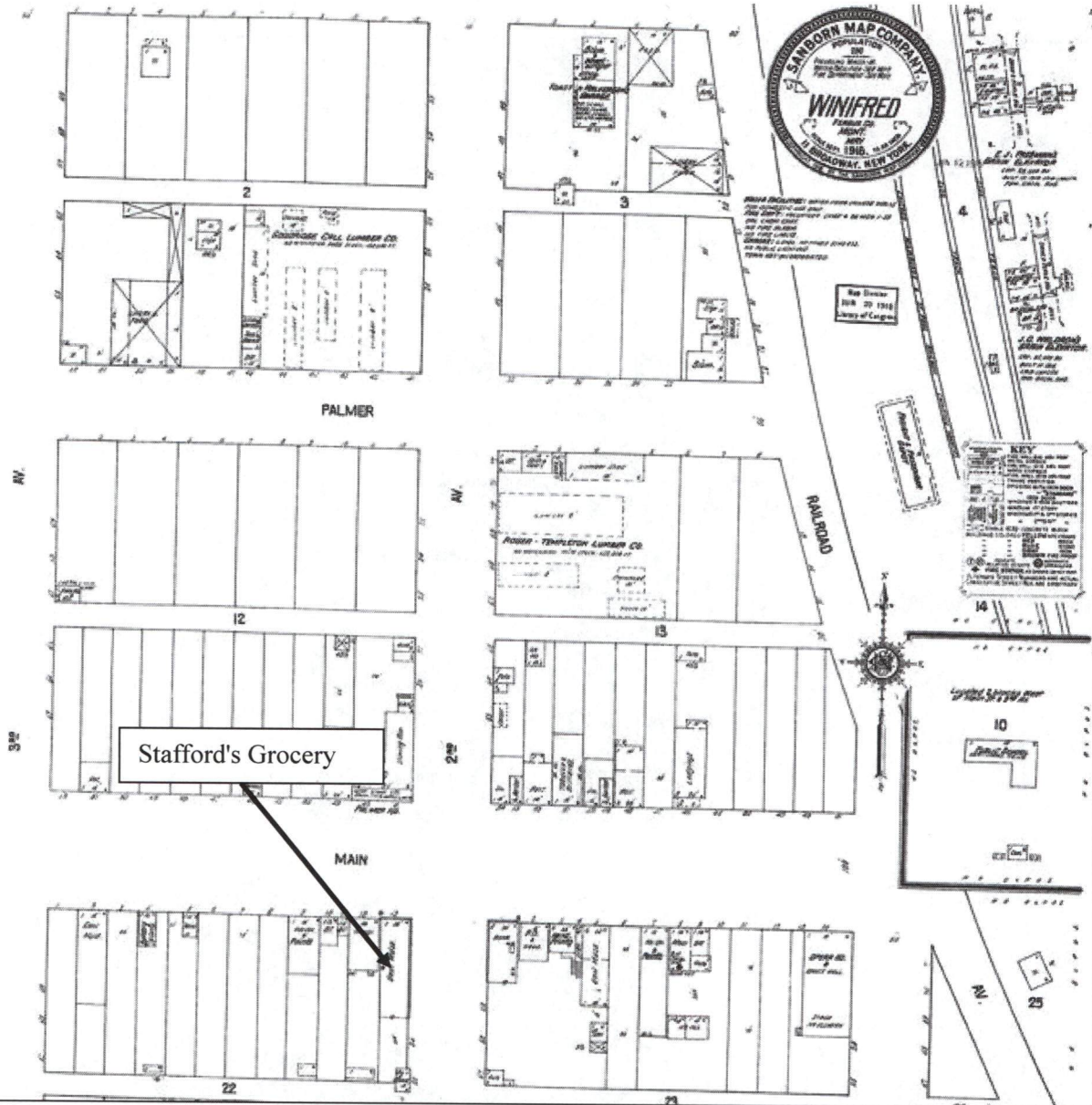
Fergus, Montana

County and State

Name of multiple listing (if applicable)

Section number Additional Documentation—Maps

Page 20



1916 Sanborn Map, Winifred, Montana

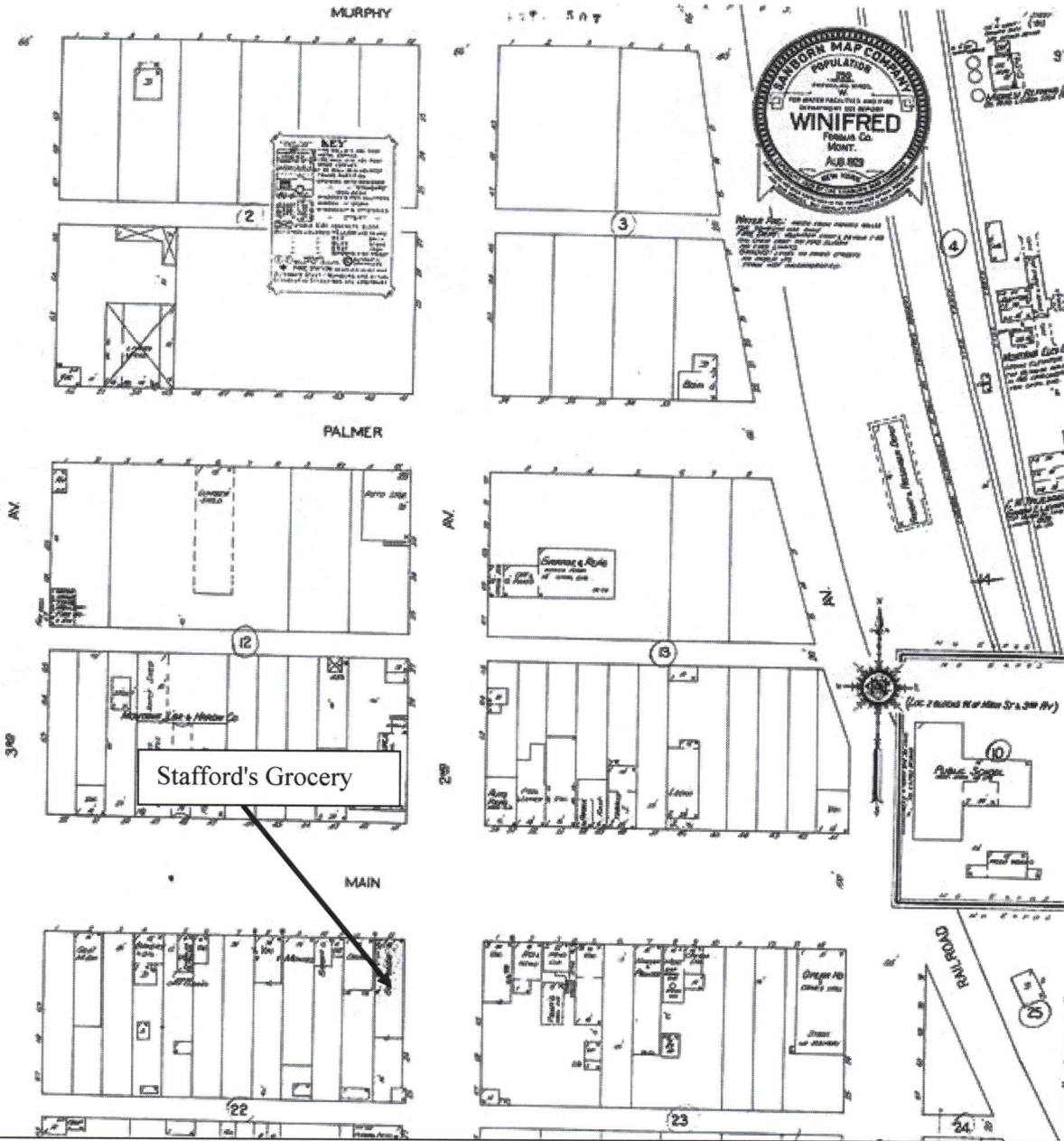
United States Department of the Interior
National Park Service

National Register of Historic Places Continuation Sheet

Stafford's Grocery
Name of Property
Fergus, Montana
County and State
Name of multiple listing (if applicable)

Section number Additional Documentation—Maps

Page 21



1929 Sanborn Map, Winifred, Montana

United States Department of the Interior
National Park Service

National Register of Historic Places
Continuation Sheet

Stafford's Grocery

Name of Property

Fergus, Montana

County and State

Name of multiple listing (if applicable)

Section number Historic Photographs

Page 22



Construction of Stafford's Grocery Store, circa 1914.

United States Department of the Interior
National Park Service

**National Register of Historic Places
Continuation Sheet**

Stafford's Grocery

Name of Property

Fergus, Montana

County and State

Name of multiple listing (if applicable)

Section number Historic Photographs

Page 23



Construction of Stafford's Grocery Store, circa 1914.

United States Department of the Interior
National Park Service

**National Register of Historic Places
Continuation Sheet**

Stafford's Grocery

Name of Property

Fergus, Montana

County and State

Name of multiple listing (if applicable)

Section number Historic Photographs

Page 24



Stafford's Grocery Store, circa 1914

United States Department of the Interior
National Park Service

**National Register of Historic Places
Continuation Sheet**

Stafford's Grocery

Name of Property

Fergus, Montana

County and State

Name of multiple listing (if applicable)

Section number Historic Photographs

Page 25



Stafford's Grocery Store, date unknown.

United States Department of the Interior
National Park Service

National Register of Historic Places
Continuation Sheet

Stafford's Grocery

Name of Property

Fergus, Montana

County and State

Name of multiple listing (if applicable)

Section number Historic Photographs

Page 26



Stafford Store in Winifred 1915-1920. E.B. Hunt behind counter (photograph courtesy of Jim Arthur)

United States Department of the Interior
National Park Service

**National Register of Historic Places
Continuation Sheet**

Stafford's Grocery

Name of Property

Fergus, Montana

County and State

Name of multiple listing (if applicable)

Section number National Register PhotographsPage 27**Photograph Log**

Name: Stafford's Grocery
 County and State: Fergus County, Montana
 Photographer: Zane Fulbright
 Date of Photograph: July 2014
 Location of original negative: Bureau of Land Management, Lewistown, MT
 Description and view of camera: Interior, looking to rear of store.
 MT_FergusCounty_Stafford'sGrocery_0001

Name: Stafford's Grocery
 County and State: Fergus County, Montana
 Photographer: Zane Fulbright
 Date of Photograph: July 2014
 Location of original negative: Bureau of Land Management, Lewistown, MT
 Description and view of camera: Façade (north). View to the south.
 MT_FergusCounty_Stafford'sGrocery_0002

Name: Stafford's Grocery
 County and State: Fergus County, Montana
 Photographer: Zane Fulbright
 Date of Photograph: July 2014
 Location of original negative: Bureau of Land Management, Lewistown, MT
 Description and view of camera: Façade (north). View to the south.
 MT_FergusCounty_Stafford'sGrocery_0003

Name: Stafford's Grocery
 County and State: Fergus County, Montana
 Photographer: Zane Fulbright
 Date of Photograph: July 2014
 Location of original negative: Bureau of Land Management, Lewistown, MT
 Description and view of camera: Façade (north). View to the south.
 MT_FergusCounty_Stafford'sGrocery_0004

Name: Stafford's Grocery
 County and State: Fergus County, Montana
 Photographer: Zane Fulbright
 Date of Photograph: July 2014
 Location of original negative: Bureau of Land Management, Lewistown, MT
 Description and view of camera: East Wall. View to the north-northwest.
 MT_FergusCounty_Stafford'sGrocery_0005

United States Department of the Interior
National Park Service

National Register of Historic Places
Continuation Sheet

Stafford's Grocery

Name of Property

Fergus, Montana

County and State

Name of multiple listing (if applicable)

Section number National Register PhotographsPage 28

Name: Stafford's Grocery
 County and State: Fergus County, Montana
 Photographer: Zane Fulbright
 Date of Photograph: July 2014
 Location of original negative: Bureau of Land Management, Lewistown, MT
 Description and view of camera: Rear Façade (south). View to the north.
 MT_FergusCounty_Stafford'sGrocery_0006

Name: Stafford's Grocery
 County and State: Fergus County, Montana
 Photographer: Zane Fulbright
 Date of Photograph: July 2014
 Location of original negative: Bureau of Land Management, Lewistown, MT
 Description and view of camera: Rear façade (south) and east wall. View to the north-northwest.
 MT_FergusCounty_Stafford'sGrocery_0007

Name: Stafford's Grocery
 County and State: Fergus County, Montana
 Photographer: Zane Fulbright
 Date of Photograph: July 2014
 Location of original negative: Bureau of Land Management, Lewistown, MT
 Description and view of camera: Rear façade (south) and west wall. View to the north-northeast.
 MT_FergusCounty_Stafford'sGrocery_0008

Name: Stafford's Grocery
 County and State: Fergus County, Montana
 Photographer: Zane Fulbright
 Date of Photograph: July 2014
 Location of original negative: Bureau of Land Management, Lewistown, MT
 Description and view of camera: Detail of window on east wall. View to the west.
 MT_FergusCounty_Stafford'sGrocery_0009

Name: Stafford's Grocery
 County and State: Fergus County, Montana
 Photographer: Zane Fulbright
 Date of Photograph: July 2014
 Location of original negative: Bureau of Land Management, Lewistown, MT
 Description and view of camera: East wall. View to the northwest.
 MT_FergusCounty_Stafford'sGrocery_0010

United States Department of the Interior
National Park Service

National Register of Historic Places
Continuation Sheet

Stafford's Grocery
Name of Property
Fergus, Montana
County and State
Name of multiple listing (if applicable)

Section number National Register Photographs

Page 29

Name: Stafford's Grocery
 County and State: Fergus County, Montana
 Photographer: Zane Fulbright
 Date of Photograph: July 2014
 Location of original negative: Bureau of Land Management, Lewistown, MT
 Description and view of camera: Façade (north) and east wall. View to the southwest.
 MT_FergusCounty_Stafford'sGrocery_0011

Name: Stafford's Grocery
 County and State: Fergus County, Montana
 Photographer: Zane Fulbright
 Date of Photograph: July 2014
 Location of original negative: Bureau of Land Management, Lewistown, MT
 Description and view of camera: West Wall. View to the south-southeast.
 MT_FergusCounty_Stafford'sGrocery_0012

United States Department of the Interior
National Park Service

**National Register of Historic Places
Continuation Sheet**

Stafford's Grocery
Name of Property
Fergus, Montana
County and State
Name of multiple listing (if applicable)

Section number National Register Photographs

Page 30



MT_FergusCounty_Stafford'sGrocery_0001. Interior, looking to rear of store.

United States Department of the Interior
National Park Service

**National Register of Historic Places
Continuation Sheet**

Stafford's Grocery

Name of Property

Fergus, Montana

County and State

Name of multiple listing (if applicable)

Section number National Register Photographs

Page 31



MT_FergusCounty_Stafford'sGrocery_0002. Façade (north). View looking south

United States Department of the Interior
National Park Service

**National Register of Historic Places
Continuation Sheet**

Stafford's Grocery

Name of Property

Fergus, Montana

County and State

Name of multiple listing (if applicable)

Section number National Register Photographs

Page 32



MT_FergusCounty_Stafford'sGrocery_0003. Façade (north). View looking south.

United States Department of the Interior
National Park Service

National Register of Historic Places
Continuation Sheet

Stafford's Grocery

Name of Property

Fergus, Montana

County and State

Name of multiple listing (if applicable)

Section number National Register Photographs

Page 33



MT_FergusCounty_Stafford'sGrocery_0004. Facade (north). View looking south

United States Department of the Interior
National Park Service

**National Register of Historic Places
Continuation Sheet**

Stafford's Grocery

Name of Property

Fergus, Montana

County and State

Name of multiple listing (if applicable)

Section number National Register Photographs

Page 34



MT_FergusCounty_Stafford'sGrocery_0005. East wall. View looking north-northwest

United States Department of the Interior
National Park Service

National Register of Historic Places
Continuation Sheet

Stafford's Grocery

Name of Property

Fergus, Montana

County and State

Name of multiple listing (if applicable)

Section number National Register Photographs

Page 35



MT_FergusCounty_Stafford'sGrocery_0006. Rear (south) Facade. View looking north

United States Department of the Interior
National Park Service

National Register of Historic Places
Continuation Sheet

Stafford's Grocery
Name of Property
Fergus, Montana
County and State
Name of multiple listing (if applicable)

Section number National Register Photographs

Page 36



MT_FergusCounty_Stafford'sGrocery_0007. Rear (south) façade and east wall. View looking north-northwest

United States Department of the Interior
National Park Service

National Register of Historic Places
Continuation Sheet

Stafford's Grocery

Name of Property

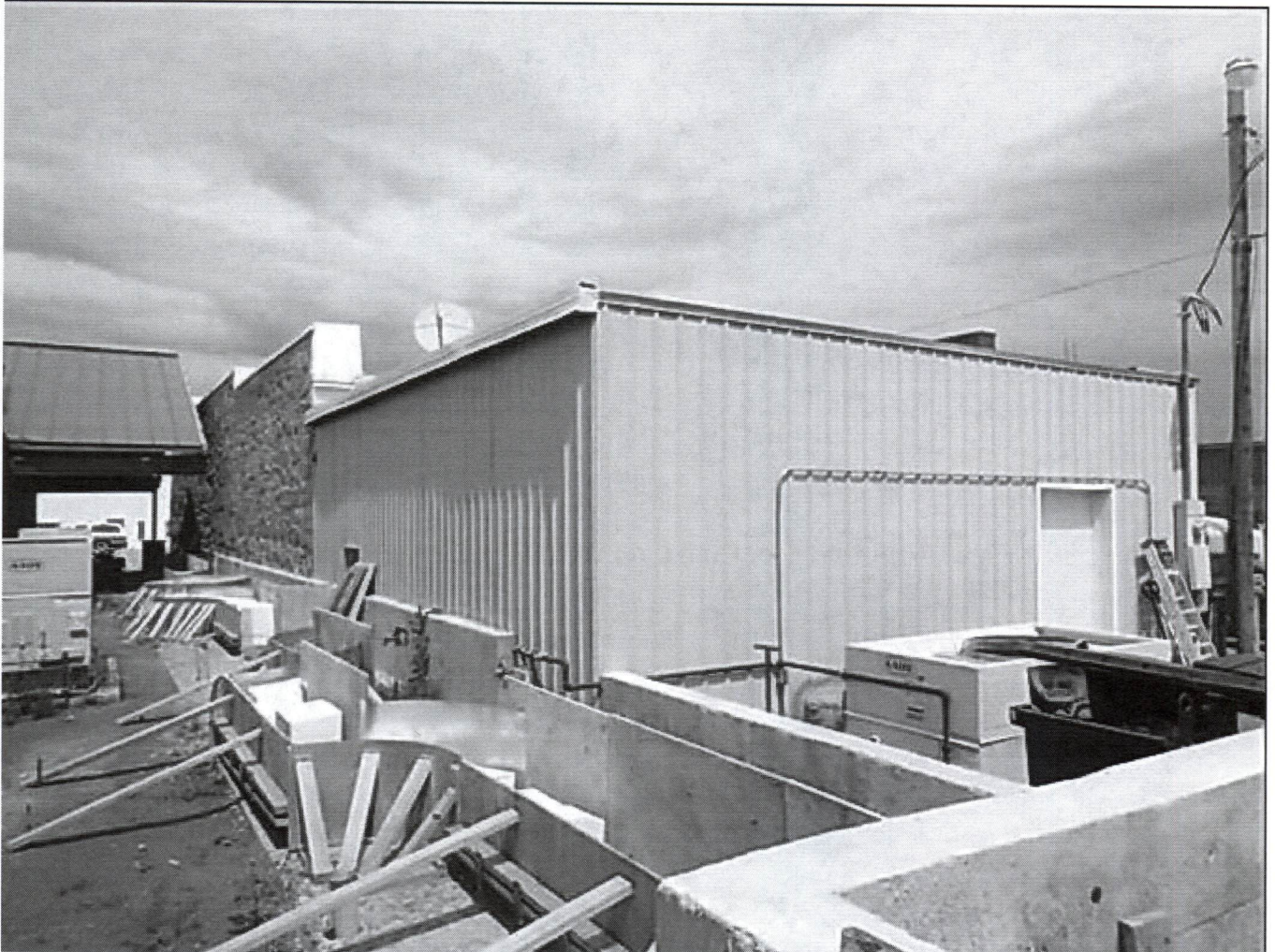
Fergus, Montana

County and State

Name of multiple listing (if applicable)

Section number National Register Photographs

Page 37



MT_FergusCounty_Stafford'sGrocery_0008. Rear (south) façade and west wall. View looking north-northeast

United States Department of the Interior
National Park Service

**National Register of Historic Places
Continuation Sheet**

Stafford's Grocery

Name of Property

Fergus, Montana

County and State

Name of multiple listing (if applicable)

Section number National Register Photographs

Page 38



MT_FergusCounty_Stafford'sGrocery_0009. Detail of window on east wall. View looking west.

United States Department of the Interior
National Park Service

**National Register of Historic Places
Continuation Sheet**

Stafford's Grocery

Name of Property

Fergus, Montana

County and State

Name of multiple listing (if applicable)

Section number National Register Photographs

Page 39



MT_FergusCounty_Stafford'sGrocery_0010. East wall. View looking northwest.

United States Department of the Interior
National Park Service

**National Register of Historic Places
Continuation Sheet**

Stafford's Grocery

Name of Property

Fergus, Montana

County and State

Name of multiple listing (if applicable)

Section number National Register Photographs

Page 40



MT_FergusCounty_Stafford'sGrocery_0011. Façade (north) and east wall. View looking southwest.

United States Department of the Interior
National Park Service

**National Register of Historic Places
Continuation Sheet**

Stafford's Grocery

Name of Property

Fergus, Montana

County and State

Name of multiple listing (if applicable)

Section number National Register Photographs

Page 41



MT_FergusCounty_Stafford'sGrocery_0012. West Wall. View to the south-southeast

