

Cover: Cattle ranch at Bigfork, L.A. Huffman, photographer.

Montana History Conference 2005  
 Montana Historical Society  
 PO Box 201201  
 Helena, MT 59620-1201

Non-Profit Org.  
 U.S. Postage  
**PAID**  
 Permit No. 151  
 Great Falls, MT



**MONTANA A TREASURED PLACE**

30th Annual Montana History Conference

October 23, 24, 25, 2005

Helena, Montana

# MONTANA, A TREASURED PLACE

## What do you hold most dear from Montana's past?

Whether housed in a museum, captured in a photograph, or situated beneath the Big Sky, these treasured objects and places serve as our most direct link to the past and the history that makes Montana what it is today. Historic treasures come in many shapes and sizes, and our conference sessions will explore what makes them special.

### Conference Locations

Thursday's workshops will be held at the Montana Historical Society and the Montana State Library. The Thursday evening keynote presentation will be in the Old Law Library in the State Capitol Building, followed by a reception at the Society. Friday and Saturday events will be held at the Best Western Helena Great Northern Hotel and Conference Center in the Great Northern Town Center, at 835 Great Northern Boulevard. Parking for the conference is available in the hotel parking lot or the Great Northern Parking Garage.

### Conference Hotel

A block of rooms has been reserved for conference attendees at the Best Western Helena Great Northern Hotel (406-457-5500).

### Additional

**accommodations:** Helena offers many choices. For recommendations, contact the Helena Chamber of Commerce (406-447-1530 or [www.helenachamber.com](http://www.helenachamber.com)).



Catherine Moore Cox in the punch bowl from the U.S.S. Montana silver service, c. 1908.



## THURSDAY, OCTOBER 23

Four half-day workshops – geared to educators, local historians, preservationists, family historians, museum volunteers, and others – kick off the conference.

**8:00 am – 6:00 pm**      **Conference Registration,  
Montana Historical Society Lobby.**

**9:00 am – Noon**  
**WORKSHOP:**      **Teaching Everyone's History: Integrating Native  
American Culture into the K-12 Classroom**

There is a dilemma in Montana classrooms about methods of teaching Native American history in a way that is accurate, meaningful and provides a quality educational focus. Participants in this workshop will learn: what resources are available, how to get trustworthy information, how to use Native American history in the classroom, and techniques to meet Montana's mandated *Indian Education for All* initiative. Presenters include: Julie Cajune - Director of Indian Education, Ronan Public Schools – 2002 Milken Teacher of the Year; Joe Anderson - English Department, Helena High School – 2003 Indian Educator of the Year; Lori Falcoln - Indian Education Specialist, Office of Public Instruction; and Julie Keenan - Education Outreach Coordinator, Montana Historical Society. Limit 30 people. MHS Classroom.

**WORKSHOP:**      **From the Foundation Up: Tracing the  
History of Your Property**

Old houses are more than weekend improvement projects; they are physical representations of your community's past. In this workshop, Kate Hampton, Architectural Historian at the MHS State Historic Preservation Office, will take you through the basic steps toward uncovering past owners, determining architectural significance, and discovering how your property fits in the patterns of local history. Limit 15 people. MHS Boo Auditorium.



**1:00 pm – 4:00 pm**

**WORKSHOP: So You Have a Box of Records . . .**

Historical societies across Montana hold priceless archival materials that provide unique views into the state's history. Join Anne Foster, University Archivist at the University of Alaska, Fairbanks, to learn the basics of caring for these materials. This workshop, sponsored by the Montana State Historical Records Advisory Board, will address everything from how to track donations, to arranging and describing materials, to best practices for the long-term preservation of archival materials. Limit 25 people. MHS Classroom.

**WORKSHOP: History Resources on the Internet**

From photographs to indexes, historical documents to full-text books and articles, there are thousands of websites that provide valuable tools for historians, museum workers, students, educators, and researchers of all kinds. In addition to providing an introduction to these websites, Montana State Library reference librarian John Heldt and MHS press assistant editor Molly Holz will provide tips on effective ways to use on-line search engines, databases, and card catalogs. Please bring the address of your favorite website to share. Limit 12 people. Montana State Library Computer Lab, 1515 E. Sixth Ave.

**6:00 pm – 6:45 pm KEYNOTE ADDRESS: Lewis and Clark as Guides to Montana Before European Settlement**

Dr. Daniel B. Botkin will pull back the metaphorical curtains and show how Lewis and Clark provide a wonderful window on the past—a snapshot of what landscapes, ecosystems, animals and plants existed before Montana was altered by western civilization. We have many beliefs about the characteristics of "nature" undisturbed by western civilization, and a number of these are false. The journals of Lewis and Clark help us understand what the countryside really was like and how it has changed. This illustrated talk, held in the Montana State Capitol Old Law Library, will make use of the Lewis and Clark journals to discuss "nature" in Montana then and now.



Dr. Daniel B. Botkin

Dr. Botkin long has been a recognized authority in the field of Lewis and Clark. He has focused on the ecological and environmental



world into which the Expedition stepped and on the ways in which man has altered that world. His work, *Our Natural History: The Lessons of Lewis and Clark* (Putnam, 1995), is a classic in the field. Dr. Botkin currently is the president of the Center for the Study of the Environment in Santa Barbara, California. He is the author of more than one hundred books, scientific papers, and popular articles addressing ecological and environmental issues. He holds degrees in physics (B.A., University of Rochester), literature (M.A., University of Wisconsin), and biology (Ph.D., Rutgers).

**7:00 pm – 9:00 pm RECEPTION**

Join us at the Montana Historical Society for an evening of entertainment and refreshment. Visit the museum's newest exhibits, *Treasure State Treasures*, *L. A. Huffinan: Photographer of The West*, and *Youth Discover the Lewis and Clark Expedition*; converse with friends; shop in our store; and enjoy hors d'ouvres, drinks, and entertainment by Montana musicians. MHS Lobby.

**ADDITIONAL THURSDAY EVENTS**

**9:30 am – Noon State Historical Records Advisory Board Meeting**

Chaired by State Archivist Molly Miller, the SHRAB welcomes members of local historical and genealogical societies to attend this public meeting. Montana State Capitol Secretary of State's Conference Room.

**1:00 pm – 4:00 pm Montana Historical Society Board of Trustees Meeting**

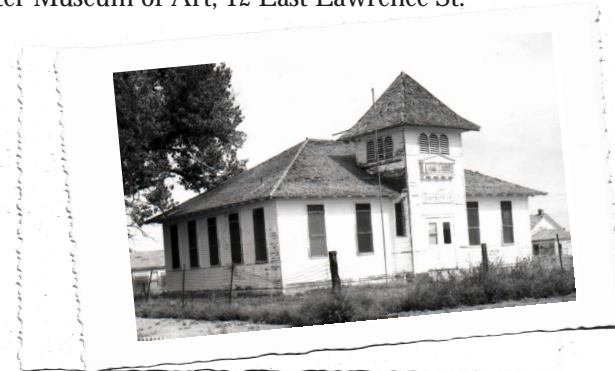
MHS Boo Auditorium.

**1:00 pm – 4:00 pm Statewide Historic Preservation Commission Meeting**

Chaired by SHPO Community Preservation Coordinator Rolene Schliesman. The Plaza (old Cooney Home), 3404 Cooney Drive.

**3:30 – 5:00 pm Museums Association of Montana (MAM) Board Meeting**

Chaired by MAM President Robin Urban, Director of the World Museum of Mining, Holter Museum of Art, 12 East Lawrence St.



Rancher School, Treasure County, Kristi Hager, photographer





## FRIDAY, OCTOBER 24

**7:30 am – 5:00 pm**    **REGISTRATION, Great Northern Hotel Convention Center Lobby**

**8:00 am – 8:45 am**    **WELCOME AND STATE OF THE SOCIETY ADDRESS**

Montana Historical Society Director Arnie Olsen will welcome conference attendees and deliver the annual State of the Society Address.

**9:00 am – 10:15 am**    **CONCURRENT SESSIONS**

### **Uncle Sam Under the Big Sky: The Federal Legacy in Montana's Historical Places**

Chair: Thomas Foor

Montana heritage program representatives from three federal agencies describe and illustrate the contributions of their respective organizations to the Montana historical landscape, and how that legacy is being preserved today. Speakers: Milo McLeod (U. S. Forest Service), William Vincent (Bureau of Reclamation) and Marvin Keller (Bureau of Indian Affairs).

### **Showcasing Montana History Scholars**

Chair: Dave Walter

Students from Montana State University-Bozeman, The University of Montana, and Carroll College continue a long-standing series that brings cutting-edge academic research to the Conference. The Dennis and Phyllis Washington Foundation will award scholarships to the presenters. Please check the Conference program for specific presenters and topics.



Shepherd reading inside sheep wagon.  
L.A. Huffman, photographer.

### **Making a Home on Foreign Ground: Montana War Brides**

Chair: Jodie Foley

Seena Kohl will lead a panel discussion with Montana women interviewed as part of a Montana Historical Society war-bride oral-history project in 2001-2002. Personal stories reflect upon themes of immigration, perceptions of America, and adjusting to new lives in Montana.

**10:15 am – 10:45 am**    **BREAK**

**10:45 am – Noon**    **CONCURRENT SESSIONS**

### **Exploring Montana with a Woman's Eye**

Chair: Martha Kohl

The three women whose lives are the subject of this session each saw something different in Montana's people and places. Mary Murphy will talk about Marion Post Wolcott, who, as the only woman photographer the Farm Security Administration sent to Montana, photographed people and places from Birney to Glacier Park. Ellen Baumler will discuss Mary Ronan, whose memoir has long been noted for its colorful portrayal of the state's rough-and tumble mining camps. Drawing on family memories and letters, diaries, and notebooks, Ripley Hugo will describe how her mother, novelist Mildred Walker, wove her perceptions of Montana into her writings.

### **Diamonds in the Rough: A Few of Montana's Lesser-Known Historical Treasures**

Chair: Jon Axline

For decades, working historians and archaeologists have been criss-crossing the state in search of Montana's history on behalf of federal and state agencies that must consider potential impacts from development. This session is a celebration with three examples (Pasquale Petosa Homestead; Old Blackfeet Agency; and stone buildings in the Tongue River Valley) of the many unsung yet significant sites discovered and researched by these efforts. Speakers: Janene Caywood (Historical Research Associates), Mark Hufstetler (Renewable Technologies, Inc.), and Steve Platt (Montana Department of Transportation).



### Museum Cultural Collections: Plunder or Preservation?

Chair: Don Wetzel

MHS Curator of Historical Collections George Oberst guides Emma Hansen (Curator, Buffalo Bill Historical Center), Kitty Deer Nose (Curator, Little Bighorn Battlefield National Monument) and Professor Joe McGeshick (Fort Peck Community College) in a lively discussion of collections-related issues confronting Indian peoples, museums, and museum curators. Topics to be addressed include acquisition, NAGPRA, and exhibits.

### 12:15 pm – 1:30 pm LUNCHEON

Join us for a lunch-time award presentation and a humorous look at historic happenings in Helena. The Montana Preservation Alliance (MPA), dedicated to preserving Montana's historic places and cultural heritage, will present its annual awards for preservation leadership and significant preservation projects. In "From the Gold Rush to Kaczynski," MHS interpretive historian Ellen Baumler shares a quick collage of local vignettes that portray the lighter side of Helena's history.

### 1:45 pm – 3:00 pm CONCURRENT SESSIONS

#### Pictures of a Treasured Place

Chair: Rebecca Kohl

Lory Morrow, MHS Photograph Archives supervisor, will highlight notable images selected from the Society's holdings of 400,000+ photographs, and discuss the ways in which these historic images educate, enlighten, and entertain modern viewers. Gene Allen, noted authority on the photography of L. A. Huffman, will follow with his insights into the story behind many of the remarkable images produced by this extraordinary Miles City photographer.



Spotted Eagle's hostile Sioux village, Tongue Valley, Nov. 1879, L.A. Huffman, photographer.



Karl Bodmer (1809-1893), Indian Utensils and Arms, Aquatint with engraving.

#### Showcasing Montana Tribal College Scholars

Chair: Dave Walter

Students from Fort Peck Community College, Dull Knife Memorial College, and Little Big Horn College bring original tribal-college scholarship to the Conference forum. The Dennis and Phyllis Washington Foundation will award scholarships to the presenters. Please check the Conference program for specific presenters and topics.

#### Beyond the Battlefield: Military Medicine on the Western Frontier

Chair: Herbert M. Swick, M.D.

Drs. Dale C. Smith and Anton P. Sohn examine the common image that frontier military medicine evokes of scenes of hasty battlefield amputations and crude attempts to treat bullet wounds or saber slashes with two ounces of whiskey as the only anesthetic. The contributions of 19th century military physicians were much more complex, often leading to important advances in medical science and public health. Sponsored by WWAMI (Wyoming, Washington, Alaska, Montana, Idaho) Medical History Group and the Volney Steele Endowment.



# SCHEDULE AT A GLANCE

## THURSDAY, OCTOBER 23 Montana Historical Society and Capitol Complex

**8:00 am – 6:00 pm** Registration, Montana Historical Society Lobby  
**9:00 am – Noon** Workshop: **Teaching Everyone's History: Integrating Native American Culture into the K-12 Classroom**, MHS Classroom  
 Workshop: **From the Foundation Up: Tracing the History of Your Property**, MHS Boo Auditorium  
**1:00 pm – 4:00 pm** Workshop: **So You Have a Box of Records ....** MHS Classroom  
 Workshop: **History Resources on the Internet**, State Library Computer Lab  
**6:00 pm – 6:45 pm** Keynote Address: **Lewis and Clark as Guides to Montana Before European Settlement**, by Dr. Daniel Botkin, State Capitol Old Law Library  
**7:00 pm – 9:00 pm** Reception, MHS Lobby

## FRIDAY, OCTOBER 24 Best Western Helena Great Northern Hotel

**7:30 am – 5:00 pm** Registration, Convention Center Lobby  
**7:30 am – 6:30 pm** Exhibitors, Convention Center Lobby and Oriental Ltd A & B  
**8:00 am – 8:45 am** Welcome and State of the Society Address  
**9:00 am – 10:15 am** Concurrent Sessions  
**Uncle Sam Under The Big Sky: The Federal Legacy in Montana's Historical Places**  
**Showcasing Montana History Scholars**

**10:45 am – 12:00 pm**

**12:15 pm – 1:30 pm**

**1:45 pm – 3:00 pm**

**3:15 pm – 4:30 pm**

**5:30 pm – 6:30 pm**

**6:45 pm – 9:00 pm**

### Making a Home on Foreign Ground: Montana War Brides

Concurrent Sessions

**Exploring Montana with a Woman's Eye**

**Diamonds in the Rough: A Few of Montana's Lesser-Known Historical Treasures**

**Museum Cultural Collections: Plunder or Preservation?**

Luncheon

Concurrent Sessions

**Pictures of a Treasured Place**

**Showcasing Montana Tribal College Scholars**  
**Beyond the Battlefield: Military Medicine on the Western Frontier**

Plenary Session: **Dinosaur Discoveries in Montana, An Historical Perspective**, by Dr. Jack Horner

Cocktails and Conversation

Banquet--Awards

## SATURDAY, OCTOBER 25 Best Western Helena Great Northern Hotel

**7:00 am – 11:00 am**

**7:30 am – 11:00 am**

**7:30 am – 8:45 am**

**9:00 am – 10:30 am**

**11:00 am – 7:00 pm**

**1:00 pm – 5:30 pm**

Registration, Convention Center Lobby

Exhibitors, Convention Center Lobby and Oriental Ltd A & B

Bradley Breakfast: **When Home Was Hospice: A Case Study in Care of the Dying in 1920s Lavina, Montana**, by Dawn Nickel

Plenary Session: **Jerks in Montana History: Speaking Ill of the Dead**

### Afternoon Tours

Tour #1 Discover Deer Lodge

Tour #2 Exploring Lewis and Clark in the Townsend Valley



Dr. John "Jack" Horner

**3:15 pm – 4:30 pm**  
**PLENARY SESSION**  
**Dinosaur Discoveries in Montana,**  
**An Historical Perspective**

Dr. John "Jack" Horner, renowned Curator and Regent's Professor of Paleontology, Museum of the Rockies at Montana State University, presents a unique look at the history of early dinosaur hunters in Montana and how their discoveries influenced the discipline of paleontology on a global scale. No stranger to discoveries of his own, Dr. Horner discovered the

first dinosaur eggs in the Western Hemisphere, the first evidence of dinosaur colonial nesting, the first evidence of parental care among dinosaurs, and the first dinosaur embryos. He has written over 40 professional papers and 25 popular articles, co-authored five books, and served as technical advisor to Steven Spielberg's movies *Jurassic Park* and *The Lost World*. A recipient of numerous scholarly and service awards, Jack has brought the history of dinosaurs and paleontology alive in hundreds of lectures around the world.

**5:30 pm – 6:30 pm COCKTAILS AND CONVERSATION**  
 Montana Historical Society Press authors and guest authors will be available to visit and sign books. Conclusion of the Museums Association of Montana Silent Auction. No host bar.

**6:45 pm – 9:00 pm BANQUET--AWARDS**  
 Join us for dinner and a celebration of some of Montana's historical treasures! We will present a variety of awards including: the Vivian A. Palladin Award to the author of the best article published in *Montana The Magazine of Western History*, the MHS Board of Trustees awards recognizing Montanans who have made significant contributions to the study of Montana history; the Merrill G. Burlingame-K. Ross Toole Award, given annually to the college student who submits the best manuscript for publication in *Montana The Magazine of Western History*, and the MHS Trustees Educator's Award,



honoring an outstanding educator working in the field of Montana and/or western history. Kirby Lambert, MHS Curator, will conclude dinner with a brief, light-hearted look at the results of the recent Treasure State Treasures survey conducted by Montana's Museum which asks the question: "Of Montana's many historical treasures, what do Montanans treasure most?"

Afterwards, conference attendees are invited to gather at Helena's Montana Club, at the corner of 6th and Fuller, for after-dinner drinks and a live jazz jam session.

**SATURDAY OCTOBER 25**

**7:00 am – 11:00 am REGISTRATION, Great Northern Hotel Convention Center Lobby**

**7:30 am – 8:45 am BRADLEY BREAKFAST and LECTURE**  
**When Home Was Hospice: A Case Study in Care of the Dying in 1920s Lavina, Montana.**

Bradley Fellow Dawn Nickel (University of Alberta) examines end-of-life care in 1920s Montana through the diary of Daniel Slayton who died in 1927 in his home in Lavina. Richly illustrative, the Slayton diary serves as the basis for a discussion that focuses on the significance of the institution of the "family" as the locus of care giving for the terminally-ill.



"Hannah & Mary McGovern's dry good store, Mary in doorway, Virginia City, Montana," circa 1930s.



**9:00 am – 10:30 am PLENARY SESSION**

**Jerks in Montana History: Speaking Ill of the Dead**

Chair: Dave Walter

This enduring conference favorite presents three new nominees for the "Montana Hall of Shame." Speaking ill of the dead this year will be Jodie Foley, Kristin Gallas, and Amanda Schotzberger.

**AFTERNOON TOURS**

Buses for all tours leave from and return to the parking lot at the Great Northern Town Center Hotel. Only the Deer Lodge tour includes lunch. Montana in late October can bring sun, rain, snow, and/or wind (sometimes all at once). Please be sure to wear appropriate, comfortable (layered) clothing and footwear.

**11:00 am – 7:00 pm Discover Deer Lodge Tour**

Go to prison and become a rancher! Hop the bus and explore some of the fine treasures Deer Lodge offers. Take a guided tour of the Old Montana Prison, and then visit at your leisure the Auto Museum, Powell County Museum, Frontier Montana Museum, and Yesterdays Playthings. Saddle up for a tour of Grant-Kohrs Ranch National Historic Site, and then go behind-the-scenes to tour the new curatorial center. Lunch included— prepared by the Deer Lodge Cattle Women's Association. Limit 80 people.

**1:00 pm – 5:30 pm Exploring Lewis & Clark in the Townsend Valley Tour**

Join local historians Troy Helmick and John Stoner in a guided afternoon driving tour of Expedition sites along the Missouri River in the Townsend Valley south of Helena. Beginning with the Crimson Bluffs near Townsend, the tour will take you back with Lewis & Clark to six eventful stops along the trail, including Yorks Islands, so named by Clark on his 1805 map and more recently re-established for posterity by the Crimson Bluffs Chapter of the Lewis and Clark Trail Heritage Foundation. Travel in 2003 will be by two chauffeured vans with narration along the way. Refreshments provided. Limit 12 people.

**AFTERNOON OPTIONS**

The Montana Historical Society Research Center will be open for researchers until 1:00 pm today. The museum exhibits and store will be open until 5:00 pm. Self-guided tours are available at the Montana State Capitol building. Walking tour



brochures of Helena will be on hand in conference packets. Please visit Helena's other attractions and merchants.

**ACADEMIC CREDIT FOR THE CONFERENCE**

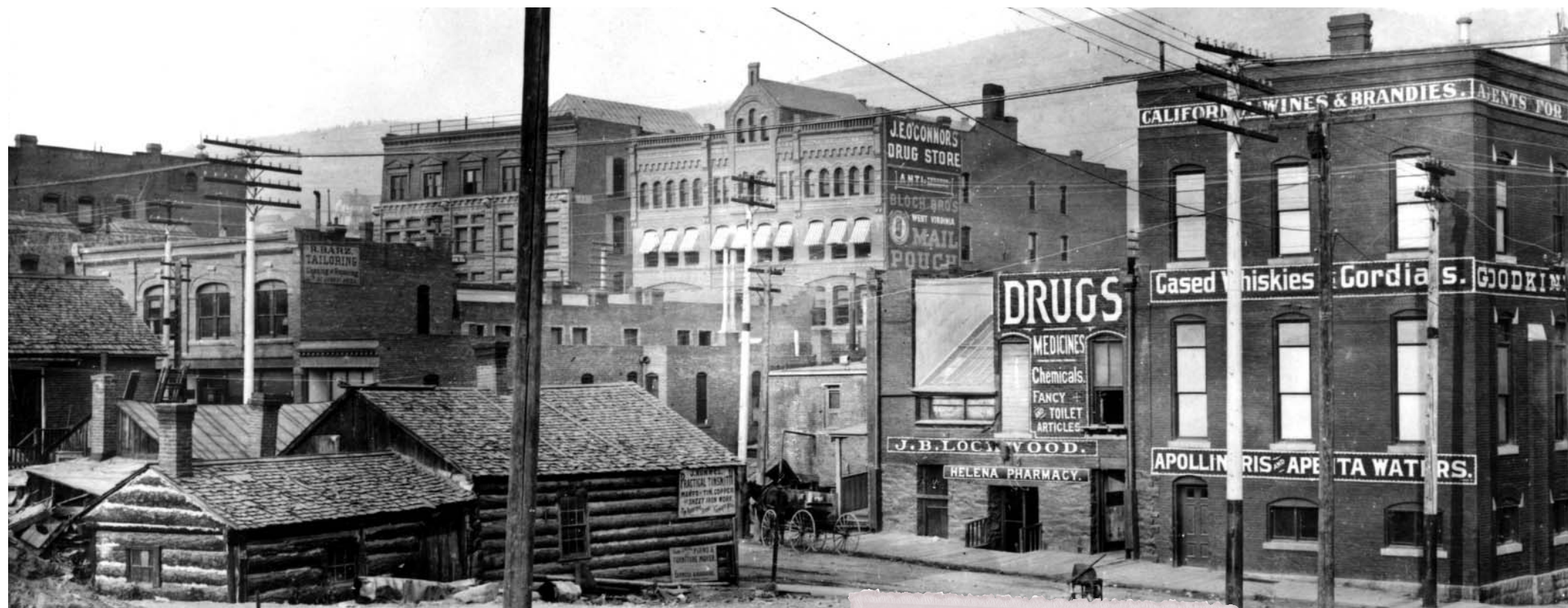
Up to 15 renewal credits (depending on the number of sessions you attend) from the Office of Public Instruction (OPI) and the Montana Historical Society (MHS) are available to teachers attending the 2003 Montana History Conference. Teachers desiring renewal credits may obtain forms during conference registration. MHS staff must sign the form at each session you attend. The list of certificate holders who complete requirements will be forwarded to OPI.



Top: 1912 Cell House, Old Montana State Prison, Deer Lodge, MT. James R. McDonald, photographer.

Bottom: Arrival of the Northern Pacific in 1883 in Helena, Montana. Haynes Foundation Collection.

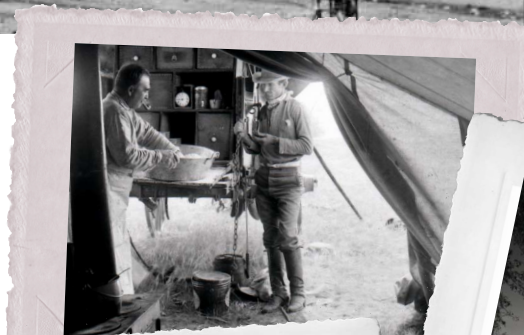




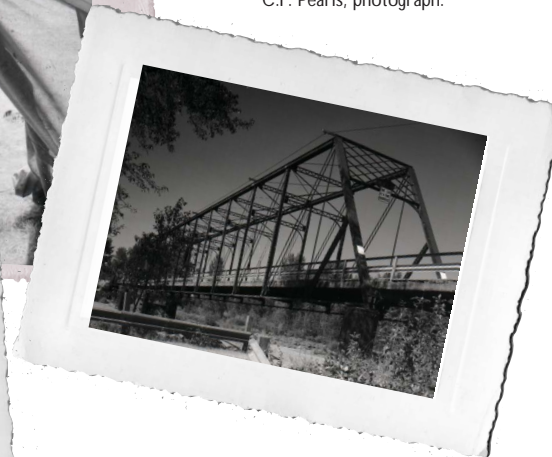
Above: Sixth Ave. and Jackson Street, downtown Helena, MT, C.F. Pearis, photograph.

**SPECIAL THANKS TO:**

- Best Western Helena Great Northern Hotel
- Dennis and Phyllis Washington Foundation
- Intermountain Media
- Lehrkind's/Montaqua Water
- Montana Club
- Montana Historical Society Bair Trust
- Montana Historical Society Bradley Trust
- Montana Historical Society Press
- Montana Historical Society Store
- Montana State Historical Records Advisory Board
- Montana Office of Public Instruction
- Montana State Library
- Montana History Foundation
- Volney Steele Medical History Endowment



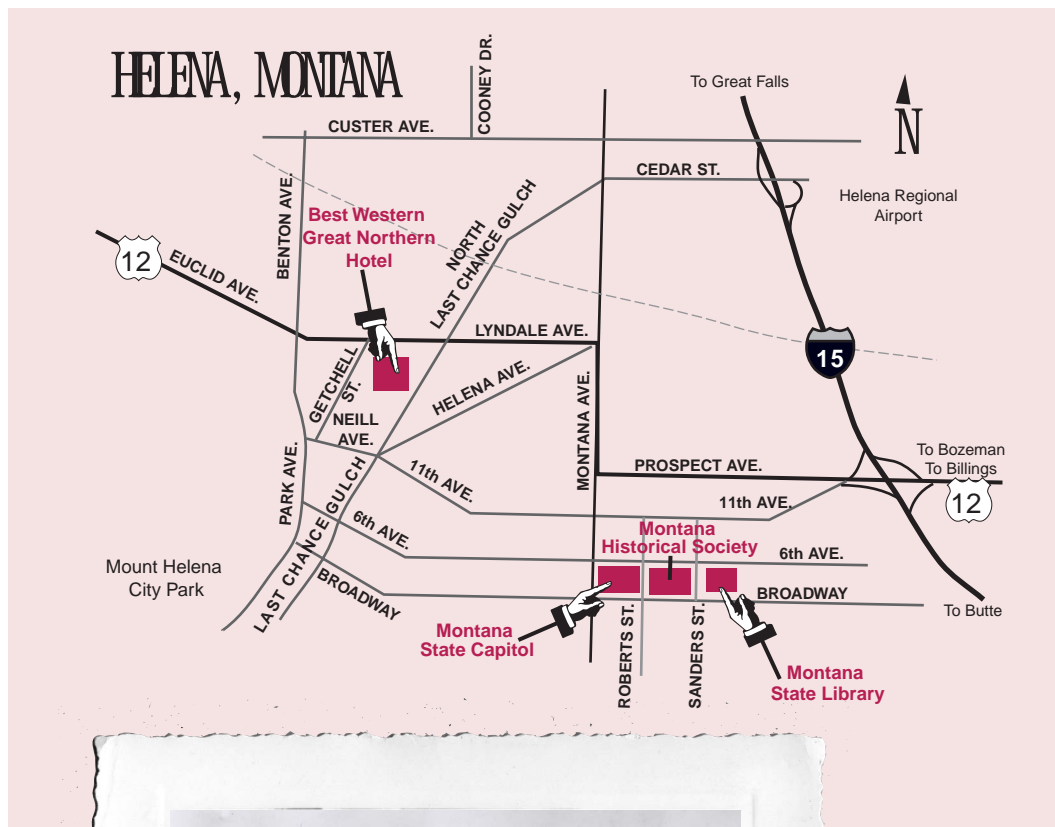
Top: Cattle Roundup, 'Butch' LU Bar cook making bread. August 1904. L.A. Huffman, photographer.



Center: Old steel bridge, Flathead County. Kristi Hager, photographer.



Bottom: Mountain Goat, John L. Clark, Cottonwood, undated. MHS, gift of Horace J. Clarke. John Reddy, photographer.



Untitled  
[no date]  
L.A. Huffman,  
photographer.

## DIRECTIONS TO HELENA

- From MISSOULA:** From Interstate 90 east, take Hwy. 12 east (115 miles)
- From BOZEMAN:** From Interstate 90 west, take Hwy. 12/287 west (95 miles)
- From GREAT FALLS:** Take Interstate 15 south (89 miles)
- From BUTTE:** Take Interstate 15 north (64 miles)



Designed by BENTON Ave. Graphic Design, Helena, Montana

## REGISTRATION FORM

**30th Annual Montana History Conference**  
Helena, Montana, October 23-25, 2003

Name \_\_\_\_\_  
 Affiliation \_\_\_\_\_  
 Street/Box No. \_\_\_\_\_ Phone \_\_\_\_\_  
 City/Town \_\_\_\_\_ State/Prov \_\_\_\_\_ Zip/Post Code \_\_\_\_\_

Conference Registration includes admission to all sessions, breaks and receptions, as well as Friday luncheon, Friday banquet, and the Saturday Bradley breakfast.

**Advance Registration**

Regular.....	\$125	\$ _____
Students (enclose copy of valid ID).....	\$40	\$ _____
MHS Prospector Members or higher level, call 406-444-2918 for discount information.....		\$ _____

**Late Registration (after October 10)**

Regular.....	\$150	\$ _____
Students .....	\$60	\$ _____

**Options and Add-Ons**

**Thursday Workshops**

Teaching Everyone's History:		
Integrating Native American Culture.....	\$15	\$ _____
From the Foundation Up: Tracing the History of Your Property.....	\$15	\$ _____
So You Have a Box of Records .....	\$15	\$ _____
History Resources on the Internet.....	\$15	\$ _____

**Saturday Afternoon Tours**

Discover Deer Lodge (Limit 80 people. Includes lunch.).....	\$25	\$ _____
Lewis and Clark in the Townsend Valley (Limit 12 people. Refreshments only.).....	\$15	\$ _____

**Additional Friday Banquet Ticket (for spouses/guests).....** \$25 \$ \_\_\_\_\_

**TOTAL \$ \_\_\_\_\_**

*Meals not available individually, except the banquet. Fees include meal gratuities. Please include payment with your registration form. Make checks payable to the Montana Historical Society.*

MasterCard, Visa, or Discover # \_\_\_\_\_

Expiration Date \_\_\_\_\_ Signature \_\_\_\_\_

Please note any dietary restrictions (i.e., vegetarian or kosher) \_\_\_\_\_

**Detach and mail to:**  
 Montana History Conference  
 Montana Historical Society  
 PO Box 201201, Helena, MT 59620-1201  
 With credit card number, detach and fax to: (406) 444-2696.  
 For conference questions: call (406) 444-2694.

